

Compagnie des chemins de fer des Carpates

Légende

- 1 Scierie
- 2 Remise de Tiamana
- 3 Halle marchandises en briques
- 4 Ferry et ponton de marée
- 5 Pompage
- 6 Dépôt matériaux en ciment
- 7 Village de Tiamana
- 8 Halte de Tiamana
- 9 Garage
- 10 Remise en bois
- 11 Dépôt
- 12 Atelier mécanique
- 13 Douane
- 14 Moulin
- 15 Halle marchandises en bois de Brasow
- 16 Chargement des grumes
- 17 Armoire, camera webcam
- 18 Gorges du Tilka
- 19 Viaduc métallique

En rouge : réalisé

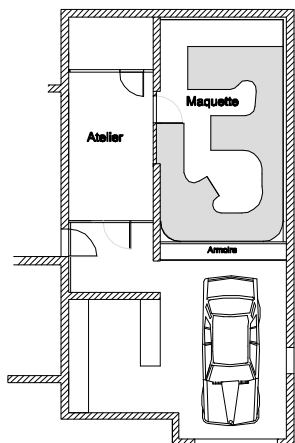
Echelle Zero

Ecartement 16.5 mm

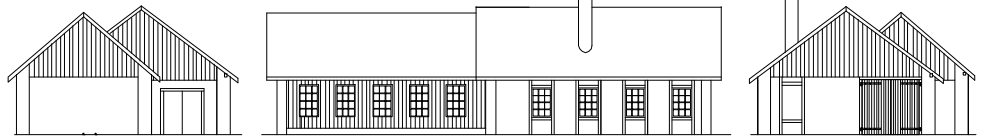
Dimensions 5.9 x 3.7 m

Rail ME code 100

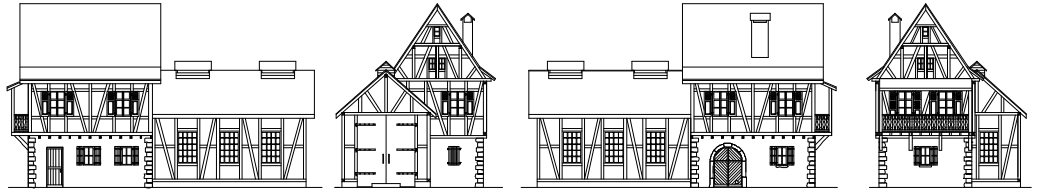
Réalisation env. 10 ans



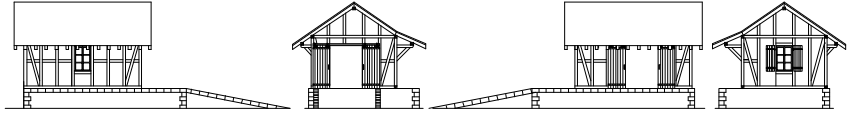
1



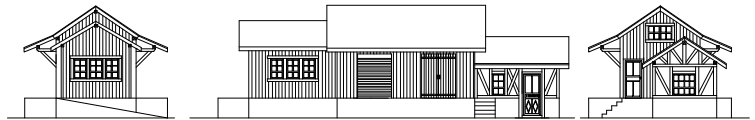
2



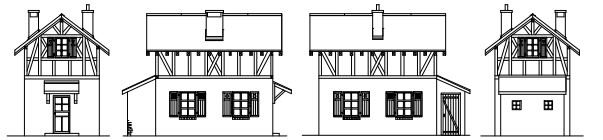
3



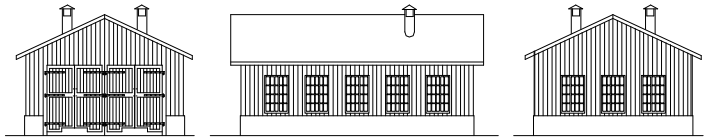
6



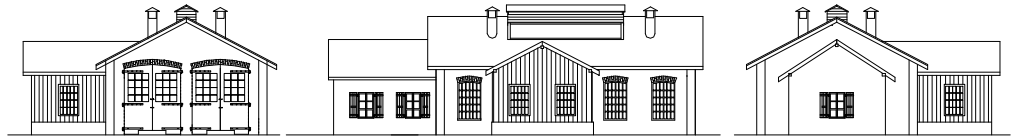
8



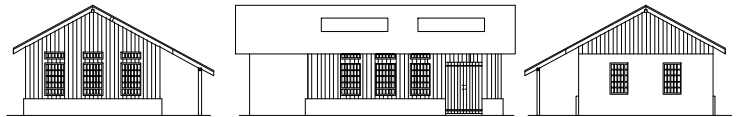
10



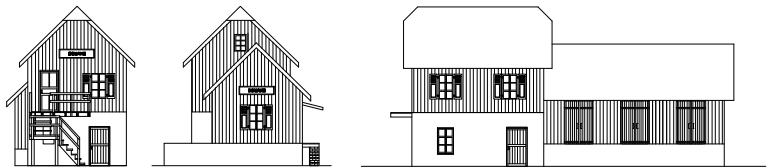
11



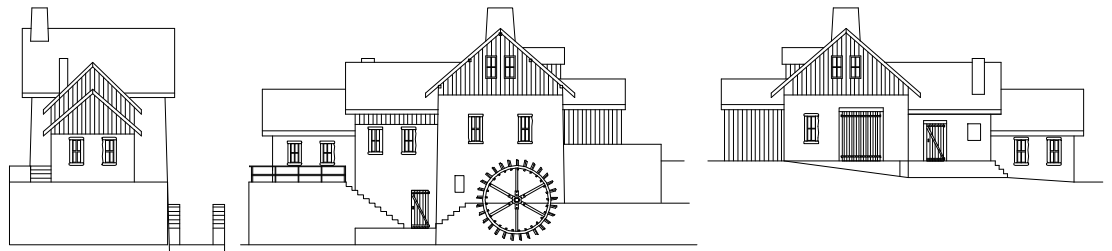
12



13



14



15

